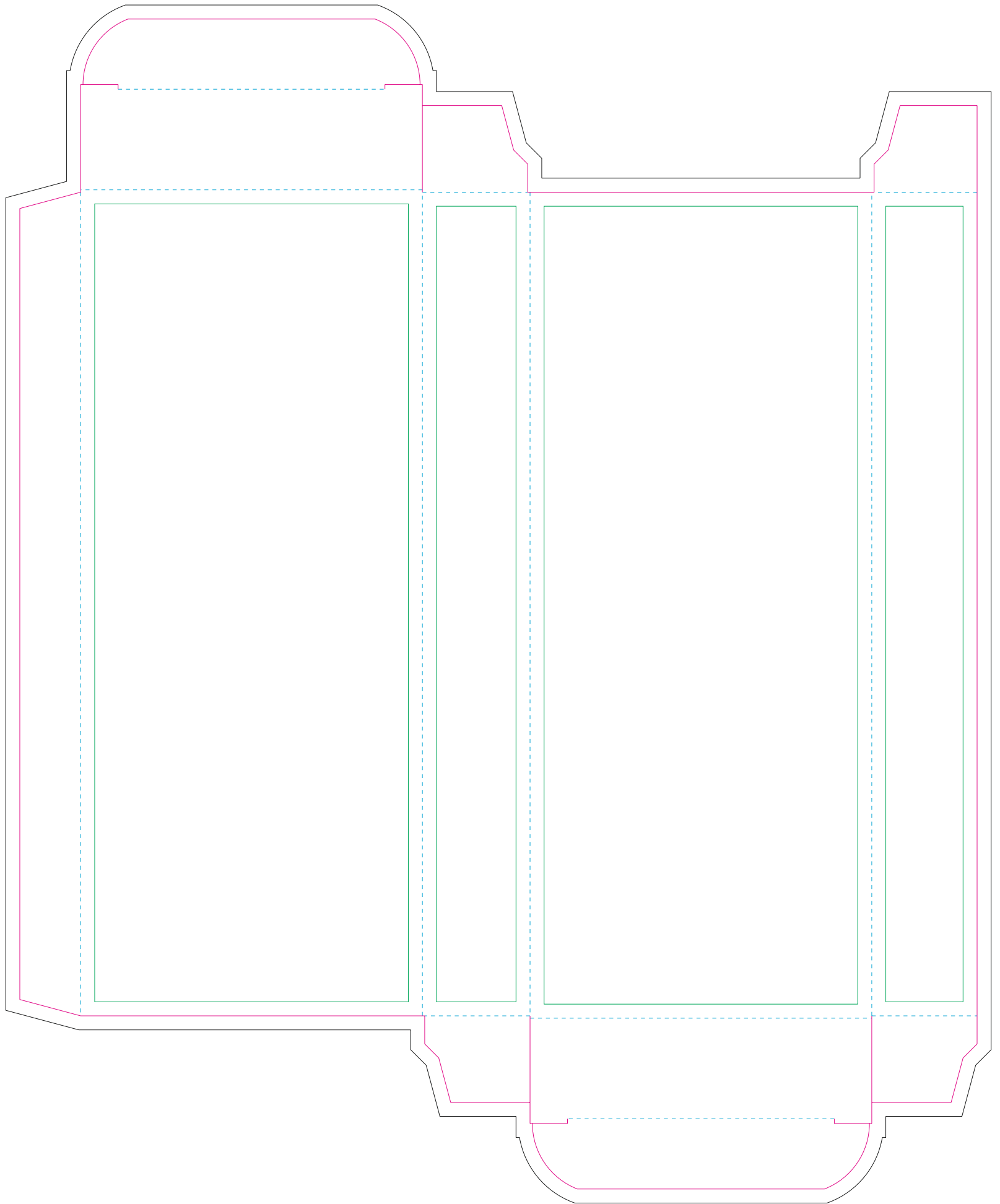


Paperboard box

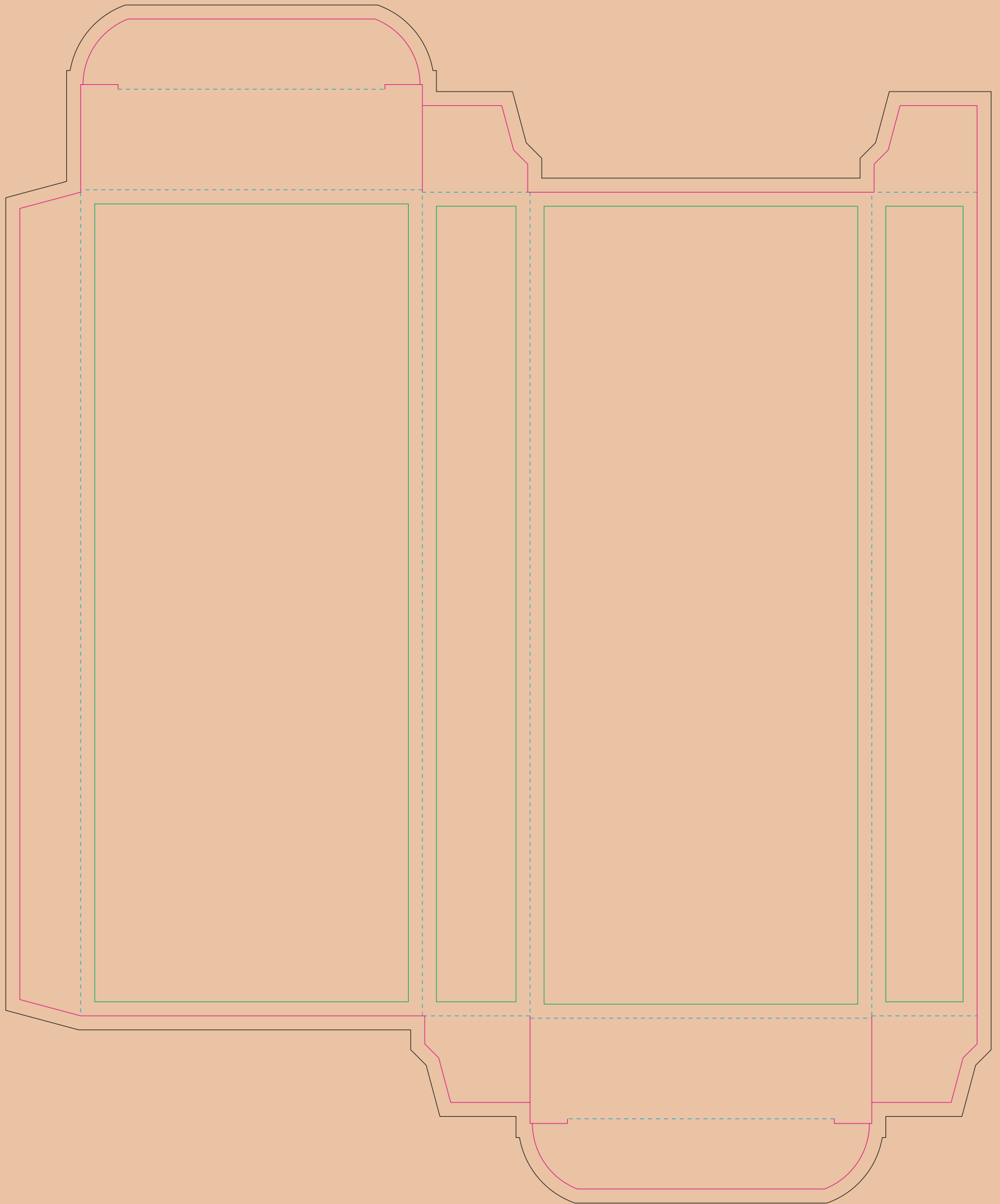


- Margin
- Edge of product
- Bleed limit 5-5 mm (background must fill it)
- - - - - Fold line

resolution: min. 300DPI
colours: CMYK
formats: TIFF, PDF, EPS, AI, CDR

The green line indicates the area all non-background object - texts, logos, etc.
The pink outline the maximum size of graphic visible on the product.
The black line indicates the size of the required graphics including bleed.

Kraft Paperboard box



- Margin
- Edge of product
- Bleed limit 5-5 mm (background must fill it)
- - - - - Fold line

resolution: min. 300DPI
colours: CMYK
formats: TIFF, PDF, EPS, AI, CDR

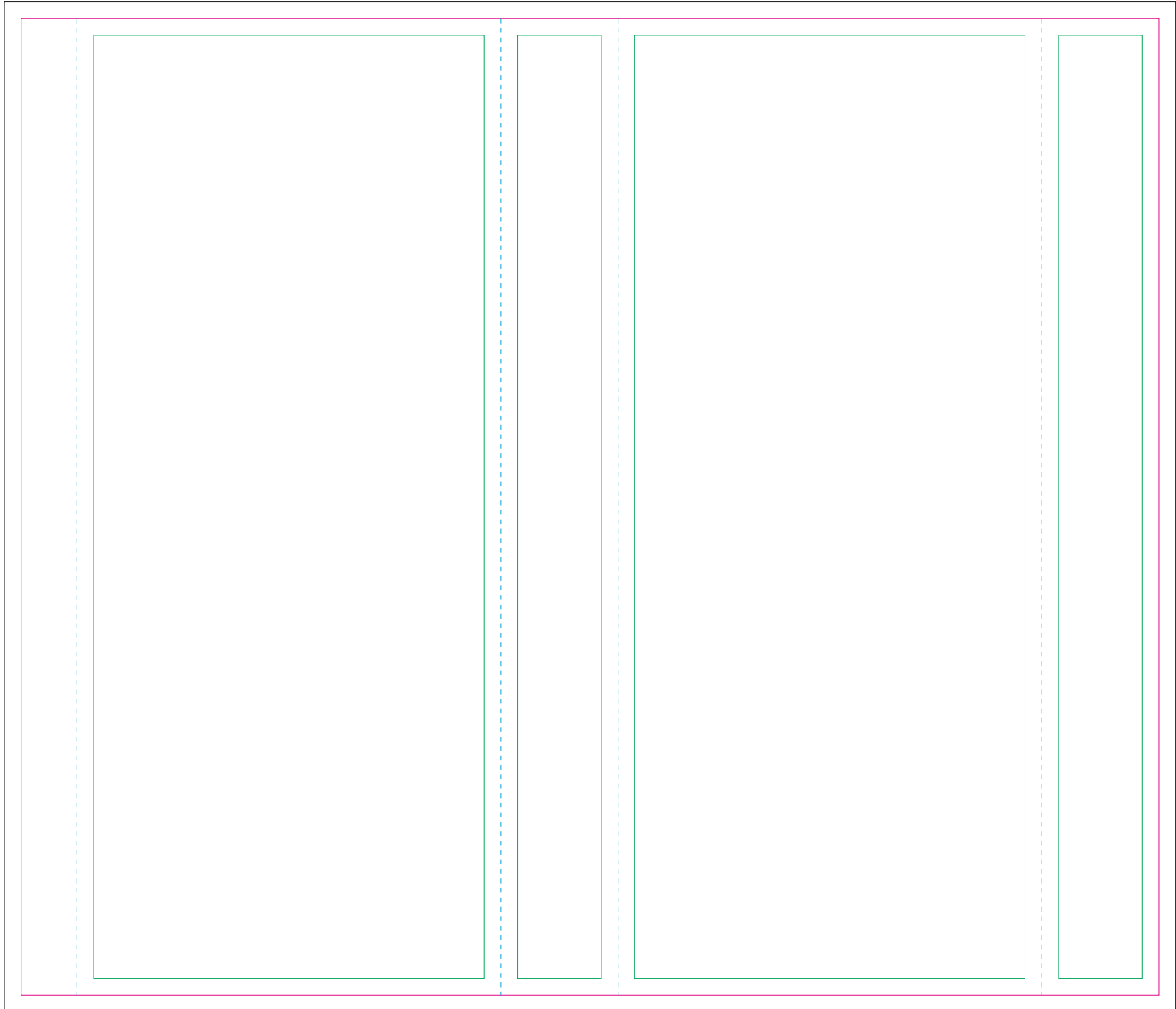
The green line indicates the area all non-background object - texts, logos, etc.
The pink outline the maximum size of graphic visible on the product.
The black line indicates the size of the required graphics including bleed.

Paper Sleeve

The size of the paper sleeve is for reference only as product packaging size may vary.

BACK

FRONT



- Margin
- Edge of product
- Bleed limit 3-3 mm (background must fill it)
- Fold line

resolution: min. 300DPI

colours: CMYK

formats: TIFF, PDF, EPS, AI, CDR

The green line indicates the area all non-background object - texts, logos, etc.

The pink outline the maximum size of graphic visible on the product.

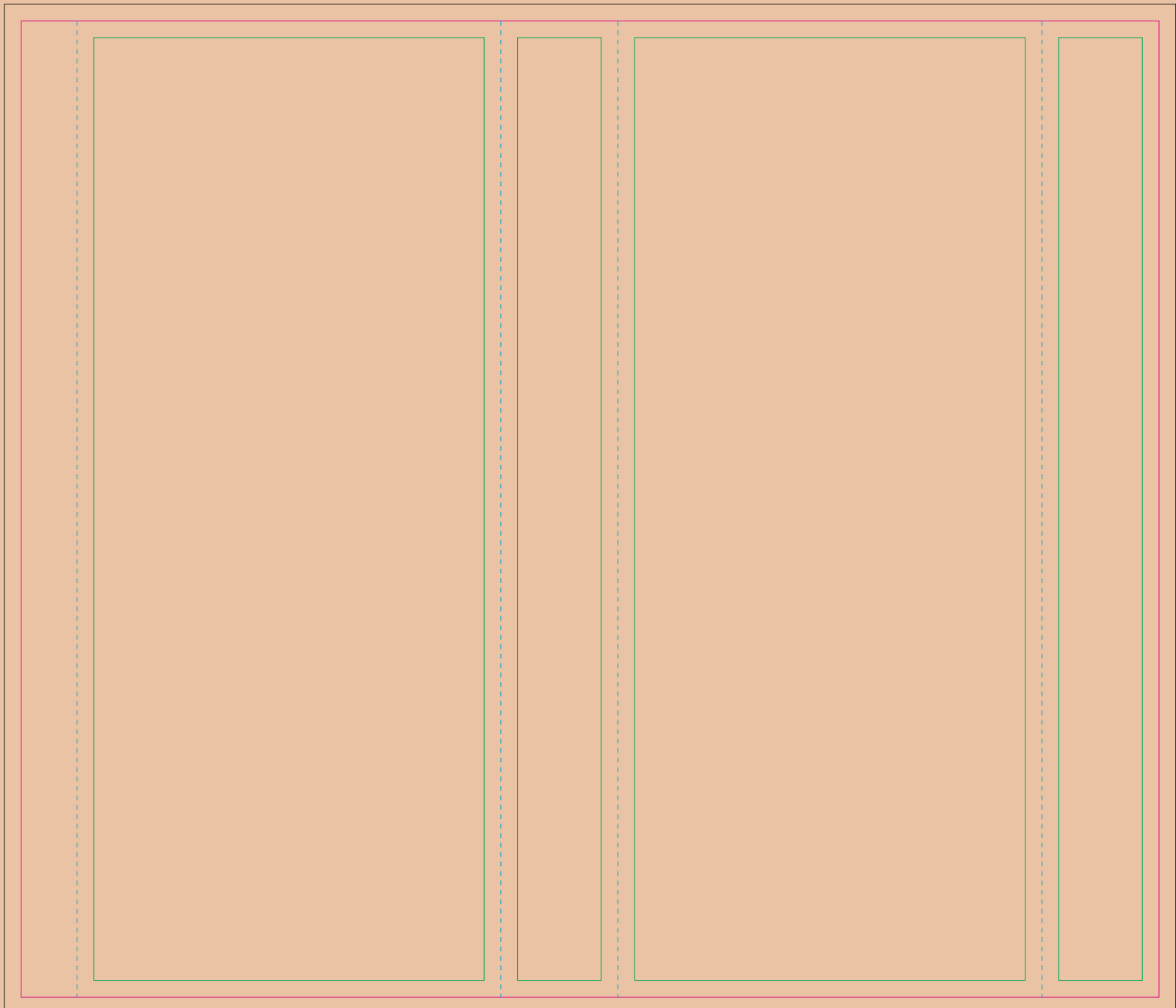
The black line indicates the size of the required graphics including bleed.

Kraft paper sleeve

The size of the paper sleeve is for reference only as product packaging size may vary.

BACK

FRONT



- Margin
- Edge of product
- Bleed limit 3-3 mm (background must fill it)
- Fold line

resolution: min. 300DPI

colours: CMYK

formats: TIFF, PDF, EPS, AI, CDR

The green line indicates the area all non-background object - texts, logos, etc.

The pink outline the maximum size of graphic visible on the product.

The black line indicates the size of the required graphics including bleed.